

## Product Specification

### Multiprotocol, 80km, 10Gb/s DWDM XFP Optical Transceiver

#### FTLX3813M3xx

#### PRODUCT FEATURES

- Supports 8.5Gb/s to 11.32Gb/s
- Hot-pluggable XFP footprint
- Temperature-stabilized DWDM EML transmitter
- RoHS-6 Compliant (lead-free)
- 100GHz ITU Grid, C-Band
- Duplex LC connector
- Power dissipation <3.5W
- Built-in digital diagnostic functions
- Temperature range: 0°C to 70°C
- Point-to-Point & OSNR optimized versions



#### APPLICATIONS

- ITU G.698.1, DW100S-2Dx, 10Gb/s DWDM SONET/SDH
- IEEE 10GBASE-ZR based DWDM Ethernet
- 10GFC (SM-1200-LL-L), 8GFC (SM-800-LC-L), and 10G CPRI
- ITU G.709, OTN/FEC applications including IEEE OTU1e and OTU2e

Finisar's FTLX3813M3xx Small Form Factor 10Gb/s (XFP) transceiver complies with the current XFP Multi-Source Agreement (MSA) Specification, INF-8077i (rev 4.5). It supports multiple protocols for point-to-point and amplified 10Gb/s DWDM applications with a maximum link length of 80km. This multi-rate, DWDM XFP transceiver supports clock and data recovery for 8G Fibre Channel, 10G Fibre Channel, 10G CPRI, 10Gb/s SONET/SDH, 10Gb/s Ethernet, and OTN/FEC protocols up to 11.32Gb/s. Digital diagnostics functions are available via a 2-wire serial interface, as specified in the XFP MSA. The transceiver is RoHS compliant and lead free per Directive 2002/95/EC<sup>3</sup>, and Finisar Application Note AN-2038<sup>4</sup>.

#### PRODUCT SELECTION

**FTLX3813M3xx**

xx: 100GHz ITU channel number

**Part Numbers for Amplified (OSNR optimized) Applications:**

Channel #	Product Code	Frequency (THz)	Center Wavelength (nm)
17	FTLX3813M317	191.7	1563.86
18	FTLX3813M318	191.8	1563.05
19	FTLX3813M319	191.9	1562.23
20	FTLX3813M320	192.0	1561.42
21	FTLX3813M321	192.1	1560.61
22	FTLX3813M322	192.2	1559.79
23	FTLX3813M323	192.3	1558.98
24	FTLX3813M324	192.4	1558.17
25	FTLX3813M325	192.5	1557.36
26	FTLX3813M326	192.6	1556.55
27	FTLX3813M327	192.7	1555.75
28	FTLX3813M328	192.8	1554.94
29	FTLX3813M329	192.9	1554.13
30	FTLX3813M330	193.0	1553.33
31	FTLX3813M331	193.1	1552.52
32	FTLX3813M332	193.2	1551.72
33	FTLX3813M333	193.3	1550.92
34	FTLX3813M334	193.4	1550.12
35	FTLX3813M335	193.5	1549.32
36	FTLX3813M336	193.6	1548.51
37	FTLX3813M337	193.7	1547.72
38	FTLX3813M338	193.8	1546.92
39	FTLX3813M339	193.9	1546.12
40	FTLX3813M340	194.0	1545.32
41	FTLX3813M341	194.1	1544.53
42	FTLX3813M342	194.2	1543.73
43	FTLX3813M343	194.3	1542.94
44	FTLX3813M344	194.4	1542.14
45	FTLX3813M345	194.5	1541.35
46	FTLX3813M346	194.6	1540.56
47	FTLX3813M347	194.7	1539.77
48	FTLX3813M348	194.8	1538.98
49	FTLX3813M349	194.9	1538.19
50	FTLX3813M350	195.0	1537.40
51	FTLX3813M351	195.1	1536.61
52	FTLX3813M352	195.2	1535.82
53	FTLX3813M353	195.3	1535.04
54	FTLX3813M354	195.4	1534.25
55	FTLX3813M355	195.5	1533.47
56	FTLX3813M356	195.6	1532.68
57	FTLX3813M357	195.7	1531.90
58	FTLX3813M358	195.8	1531.12
59	FTLX3813M359	195.9	1530.33
60	FTLX3813M360	196.0	1529.55
61	FTLX3813M361	196.1	1528.77

**Part Numbers for Point-to-Point (maximum Link Budget) Applications:**

Channel #	Product Code	Frequency (THz)	Center Wavelength (nm)
17	FTLX3813M317P	191.7	1563.86
18	FTLX3813M318P	191.8	1563.05
19	FTLX3813M319P	191.9	1562.23
20	FTLX3813M320P	192.0	1561.42
21	FTLX3813M321P	192.1	1560.61
22	FTLX3813M322P	192.2	1559.79
23	FTLX3813M323P	192.3	1558.98
24	FTLX3813M324P	192.4	1558.17
25	FTLX3813M325P	192.5	1557.36
26	FTLX3813M326P	192.6	1556.55
27	FTLX3813M327P	192.7	1555.75
28	FTLX3813M328P	192.8	1554.94
29	FTLX3813M329P	192.9	1554.13
30	FTLX3813M330P	193.0	1553.33
31	FTLX3813M331P	193.1	1552.52
32	FTLX3813M332P	193.2	1551.72
33	FTLX3813M333P	193.3	1550.92
34	FTLX3813M334P	193.4	1550.12
35	FTLX3813M335P	193.5	1549.32
36	FTLX3813M336P	193.6	1548.51
37	FTLX3813M337P	193.7	1547.72
38	FTLX3813M338P	193.8	1546.92
39	FTLX3813M339P	193.9	1546.12
40	FTLX3813M340P	194.0	1545.32
41	FTLX3813M341P	194.1	1544.53
42	FTLX3813M342P	194.2	1543.73
43	FTLX3813M343P	194.3	1542.94
44	FTLX3813M344P	194.4	1542.14
45	FTLX3813M345P	194.5	1541.35
46	FTLX3813M346P	194.6	1540.56
47	FTLX3813M347P	194.7	1539.77
48	FTLX3813M348P	194.8	1538.98
49	FTLX3813M349P	194.9	1538.19
50	FTLX3813M350P	195.0	1537.40
51	FTLX3813M351P	195.1	1536.61
52	FTLX3813M352P	195.2	1535.82
53	FTLX3813M353P	195.3	1535.04
54	FTLX3813M354P	195.4	1534.25
55	FTLX3813M355P	195.5	1533.47
56	FTLX3813M356P	195.6	1532.68
57	FTLX3813M357P	195.7	1531.90
58	FTLX3813M358P	195.8	1531.12
59	FTLX3813M359P	195.9	1530.33
60	FTLX3813M360P	196.0	1529.55
61	FTLX3813M361P	196.1	1528.77

## I. Pin Descriptions

Pin	Logic	Symbol	Name/Description	Ref.
1		GND	Module Ground	1
2		VEE5	Optional –5.2 Power Supply – <b>Not required</b>	
3	LVTTL-I	Mod-Desel	Module De-select; When held low allows the module to respond to 2-wire serial interface commands	
4	LVTTL-O	$\overline{\text{Interrupt}}$	Interrupt (bar); Indicates presence of an important condition which can be read over the serial 2-wire interface	2
5	LVTTL-I	TX_DIS	Transmitter Disable; Transmitter laser source turned off	
6		VCC5	+5 Power Supply	
7		GND	Module Ground	1
8		VCC3	+3.3V Power Supply	
9		VCC3	+3.3V Power Supply	
10	LVTTL-I	SCL	Serial 2-wire interface clock	2
11	LVTTL-I/O	SDA	Serial 2-wire interface data line	2
12	LVTTL-O	Mod_Abs	Module Absent; Indicates module is not present. Grounded in the module.	2
13	LVTTL-O	Mod_NR	Module Not Ready; Finisar defines it as a logical OR between RX_LOS and Loss of Lock in TX/RX.	2
14	LVTTL-O	RX_LOS	Receiver Loss of Signal indicator	2
15		GND	Module Ground	1
16		GND	Module Ground	1
17	CML-O	RD-	Receiver inverted data output	
18	CML-O	RD+	Receiver non-inverted data output	
19		GND	Module Ground	1
20		VCC2	+1.8V Power Supply – <b>Not required</b>	
21	LVTTL-I	P_Down/RST	Power Down; When high, places the module in the low power stand-by mode and on the falling edge of P_Down initiates a module reset  Reset; The falling edge initiates a complete reset of the module including the 2-wire serial interface, equivalent to a power cycle.	
22		VCC2	+1.8V Power Supply – <b>Not required</b>	
23		GND	Module Ground	1
24	PECL-I	RefCLK+	Reference Clock non-inverted input, AC coupled on the host board – <b>Not required</b>	
25	PECL-I	RefCLK-	Reference Clock inverted input, AC coupled on the host board – <b>Not required</b>	
26		GND	Module Ground	1
27		GND	Module Ground	1
28	CML-I	TD-	Transmitter inverted data input	
29	CML-I	TD+	Transmitter non-inverted data input	
30		GND	Module Ground	1

### Notes:

1. Module circuit ground is isolated from module chassis ground within the module.
2. Open collector; should be pulled up with 4.7k – 10kohms on host board to a voltage between 3.15V and 3.6V.

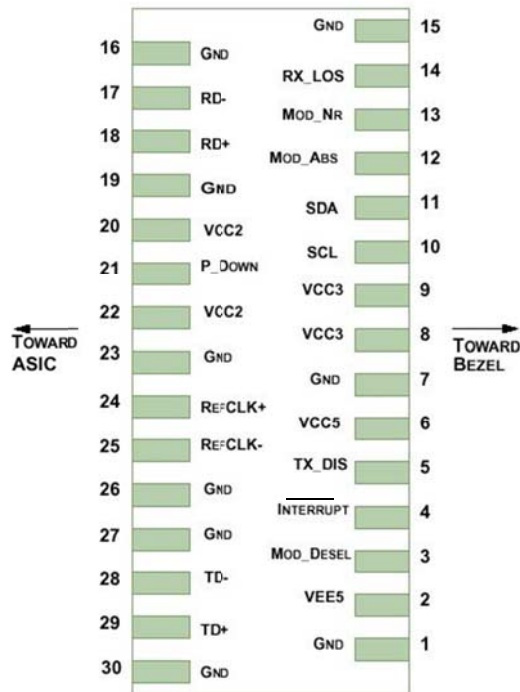


Diagram of Host Board Connector Block Pin Numbers and Names

## II. Absolute Maximum Ratings

Parameter	Symbol	Min	Typ	Max	Unit	Ref.
Maximum Supply Voltage #1	Vcc3	-0.5		4.0	V	
Maximum Supply Voltage #2	Vcc5	-0.5		6.0	V	
Storage Temperature	T <sub>S</sub>	-40		85	°C	
Case Operating Temperature	T <sub>OP</sub>	0		70	°C	
Receiver Damage Threshold	P <sub>Rdmg</sub>	+5			dBm	

**III. Electrical Characteristics ( $T_{OP} = 0$  to  $70$  °C,  $V_{CC5} = 4.75$  to  $5.25$  Volts)**

Parameter	Symbol	Min	Typ	Max	Unit	Ref.	
Supply Voltage #1	Vcc5	4.75		5.25	V		
Supply Voltage #2	Vcc3	3.13		3.46	V		
Supply Current – Vcc5 supply	Icc5			350	mA		
Supply Current – Vcc3 supply	Icc3			750	mA		
Module total power	P			3.5	W	1	
<b>Transmitter</b>							
Input differential impedance	$R_{in}$		100		$\Omega$	2	
Differential data input swing	$V_{in,pp}$	120		820	mV		
Transmit Disable Voltage	$V_D$	2.0		Vcc	V	3	
Transmit Enable Voltage	$V_{EN}$	GND		GND+ 0.8	V		
Transmit Disable Assert Time				10	us		
<b>Receiver</b>							
Differential data output swing	$V_{out,pp}$	340		850	mV	4	
Data output rise time	$t_r$			38	ps	5	
Data output fall time	$t_f$			38	ps	5	
LOS Fault	$V_{LOS\ fault}$	$V_{cc} - 0.5$		$V_{CC_{HOST}}$	V	6	
LOS Normal	$V_{LOS\ norm}$	GND		GND+0.5	V	6	
Power Supply Rejection	PSR	See Note 6 below					7

Notes:

1. Maximum total power value is specified across the full temperature and voltage range.
2. After internal AC coupling.
3. Or open circuit.
4. Into 100 ohms differential termination.
5. 20 – 80 %
6. Loss Of Signal is open collector to be pulled up with a 4.7k – 10kohm resistor to 3.15 – 3.6V. Logic 0 indicates normal operation; logic 1 indicates no signal detected.
7. Per Section 2.7.1. in the XFP MSA Specification<sup>1</sup>.

**IV. Optical Characteristics (EOL, T<sub>OP</sub> = 0 to 70°C, V<sub>CC5</sub> = 4.75 to 5.25 Volts)**

<b>Transmitter</b>						
Parameter	Symbol	Min	Typ	Max	Unit	Ref.
Output Opt. Pwr: 9/125 SMF	P <sub>OUT</sub>	-1		+3	dBm	
Optical Extinction Ratio	ER	8.2			dB	
Center Wavelength Spacing			100		GHz	1
Transmitter Center Wavelength – End Of Life	λ <sub>C</sub>	X-100	X	X+100	pm	2
Transmitter Center Wavelength – Beginning Of Life	λ <sub>C</sub>	X-25	X	X+25	pm	2
Sidemode Suppression ratio	SSR <sub>min</sub>	30			dB	
Tx Jitter (SONET) 20kHz-80MHz	T <sub>Xj1</sub>			0.3	UI	
Tx Jitter (SONET) 4MHz-80MHz	T <sub>Xj2</sub>			0.1	UI	
Relative Intensity Noise	RIN			-130	dB/Hz	
<b>Receiver</b>						
Maximum Input Power	P <sub>MAX</sub>	-7			dBm	
Optical Center Wavelength	λ <sub>C</sub>	1260		1600	nm	
Receiver Reflectance	R <sub>rx</sub>			-27	dB	
LOS De-Assert	LOS <sub>D</sub>			-30	dBm	
LOS Assert	LOS <sub>A</sub>	-37			dBm	
LOS Hysteresis		0.5			dB	
<b>Receiver Sensitivity (FTLX3813M3xx &amp; FTLX3813M3xxP)</b>						3
Data rate (Gb/s)	BER	Dispersion (ps/nm)	Sensitivity back-to-back at OSNR>30dB (dBm)	Power Penalty at OSNR>30dB (dB)	Threshold Adjust. Required	
8.5	1e-12	-500 to 1450	-24	3	No	
9.95	1e-12	-500 to 1450	-24	3	No	
10.3	1e-12	-500 to 1450	-24	3	No	
10.7	1e-4	-500 to 1300	-27	3	Yes	
11.1	1e-4	-500 to 1300	-27	3	Yes	
11.3	1e-4	-500 to 1100	-27	3	Yes	
<b>OSNR Performance (FTLX3813M3xx ONLY)</b>						4
Data rate (Gb/s)	BER	Dispersion (ps/nm)	Max OSNR w/ dispersion at Power: -7 to -18dBm (dB)		Threshold Adjust. Required	
8.5	1e-12	-500 to 1450	28		No	
9.95	1e-12	-500 to 1450	28		No	
10.3	1e-12	-500 to 1450	28		No	
10.7	1e-4	-500 to 1300	22		Yes	
11.1	1e-4	-500 to 1300	22		Yes	
11.3	1e-4	-500 to 1100	22		Yes	

**Notes:**

1. Corresponds to approximately 0.8 nm.
2. X = Specified ITU Grid wavelength. Wavelength stability is achieved within 10 seconds of power up.
3. Measured at 1528-1600nm with worst ER; BER<10<sup>-12</sup>; PRBS31.
4. All OSNR measurements are performed with 0.1nm resolution over specific Rx\_power range

**V. General Specifications**

Parameter	Symbol	Min	Typ	Max	Units	Ref.
Bit Rate	BR	8.5		11.32	Gb/s	1
Max. Supported Link Length	L <sub>MAX</sub>		80		km	

Notes:

- SONET/SDH OC-192, 10G Ethernet, SONET OC-192 with FEC, 10G Ethernet with FEC (OTU1e & OTU2e), 10GFC, 8GFC, and 10G CPRI

**VI. Environmental Specifications**

Finisar XFP transceivers have an operating temperature range from 0°C to +70°C case temperature.

Parameter	Symbol	Min	Typ	Max	Units	Ref.
Case Operating Temperature	T <sub>op</sub>	0		70	°C	
Storage Temperature	T <sub>sto</sub>	-40		85	°C	

**VII. Regulatory Compliance**

Finisar XFP transceivers are Class 1 Laser Products. They are certified per the following standards:

Feature	Agency	Standard	Certificate Number
Laser Eye Safety	FDA/CDRH	CDRH 21 CFR 1040 and Laser Notice 50	9210176-77
Laser Eye Safety	TÜV	EN 60825-1: 2007, EN60825-2:2004+A1 IEC 60825-1: 2007 (2 <sup>nd</sup> Edition) IEC 60825-2: 2010 (3 <sup>rd</sup> Edition)	R72101686
Electrical Safety	TÜV	EN 60950:2006+All	R72101686
Electrical Safety	UL/CSA	CLASS 3862.07 CLASS 3862.87	2283290

Copies of the referenced certificates are available at Finisar Corporation upon request.



## VIII. Digital Diagnostics Functions

As defined by the XFP MSA<sup>1</sup>, Finisar XFP transceivers provide digital diagnostic functions via a 2-wire serial interface, which allows real-time access to the following operating parameters:

- Transceiver temperature
- Laser bias current
- Transmitted optical power
- Received optical power
- Transceiver supply voltage
- TEC Temperature

It also provides a sophisticated system of alarm and warning flags, which may be used to alert end-users when particular operating parameters are outside of a factory-set normal range.

The operating and diagnostics information is monitored and reported by a Digital Diagnostics Transceiver Controller (DDTC) inside the transceiver, which is accessed through the 2-wire serial interface. When the serial protocol is activated, the serial clock signal (SCL pin) is generated by the host. The positive edge clocks data into the XFP transceiver into those segments of its memory map that are not write-protected. The negative edge clocks data from the XFP transceiver. The serial data signal (SDA pin) is bi-directional for serial data transfer. The host uses SDA in conjunction with SCL to mark the start and end of serial protocol activation. The memories are organized as a series of 8-bit data words that can be addressed individually or sequentially. The 2-wire serial interface provides sequential or random access to the 8 bit parameters, addressed from 000h to the maximum address of the memory.

For more detailed information, including memory map definitions, please see the XFP MSA documentation<sup>1</sup>.

### Receiver Threshold Adjustment

The FTLX3813M3xx also provides access to receiver decision threshold adjustment via 2-wire serial interface, in order to improve receiver OSNR performance based on specific link conditions. It is implemented as follows:

- Rx Threshold of XFP transceivers will be factory-set for optimized performance in non-FEC applications. This will be the default value during both cold start (power-up) and warm start (module reset).
- The transceiver supports adjustment of Rx Threshold value by the host through register 76d, table 01h. This is intended to be used in FEC applications.

- Register 76d, table 01h is a volatile memory. Therefore if the transceiver is power-cycled, the register starts up with a value of 00h which corresponds to the default Rx Threshold value.
- The threshold adjustment input value is 2's complement 7 bit value (-128 to +127), with 0 corresponding to default Rx threshold value. Full range of adjustment provides at least a  $\pm 10\%$  change in Rx threshold from the default value.

### **8.5Gb/s Fibre-Channel rate select:**

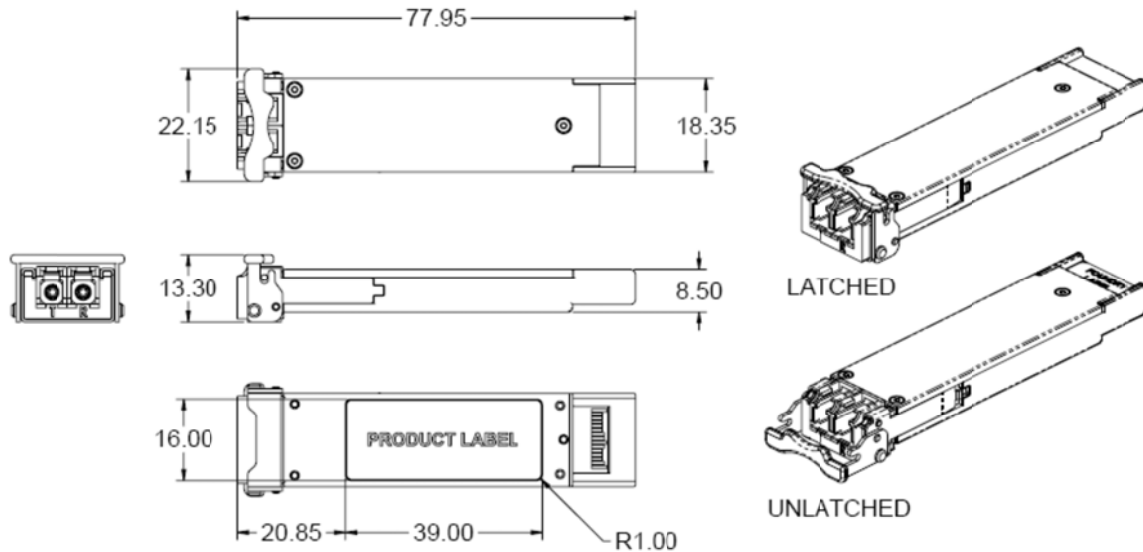
To operate the FTLX3813M3xx at 8.5Gb/s Fibre-Channel, the EEPROM-Table 0, Byte 117, Bit 0 must be set as follows;

- EEPROM Byte 117, Bit 0, value "1" for 8GFC:
- EEPROM Byte 117, Bit 0 value "0" for 10Gb/s rates:
  - (It is also possible to bypass the CDRs with, Byte 111, Bit 0.)

By default, a power cycling the transceiver will return the transceiver to normal 10Gb/s operation with the CDRs active.

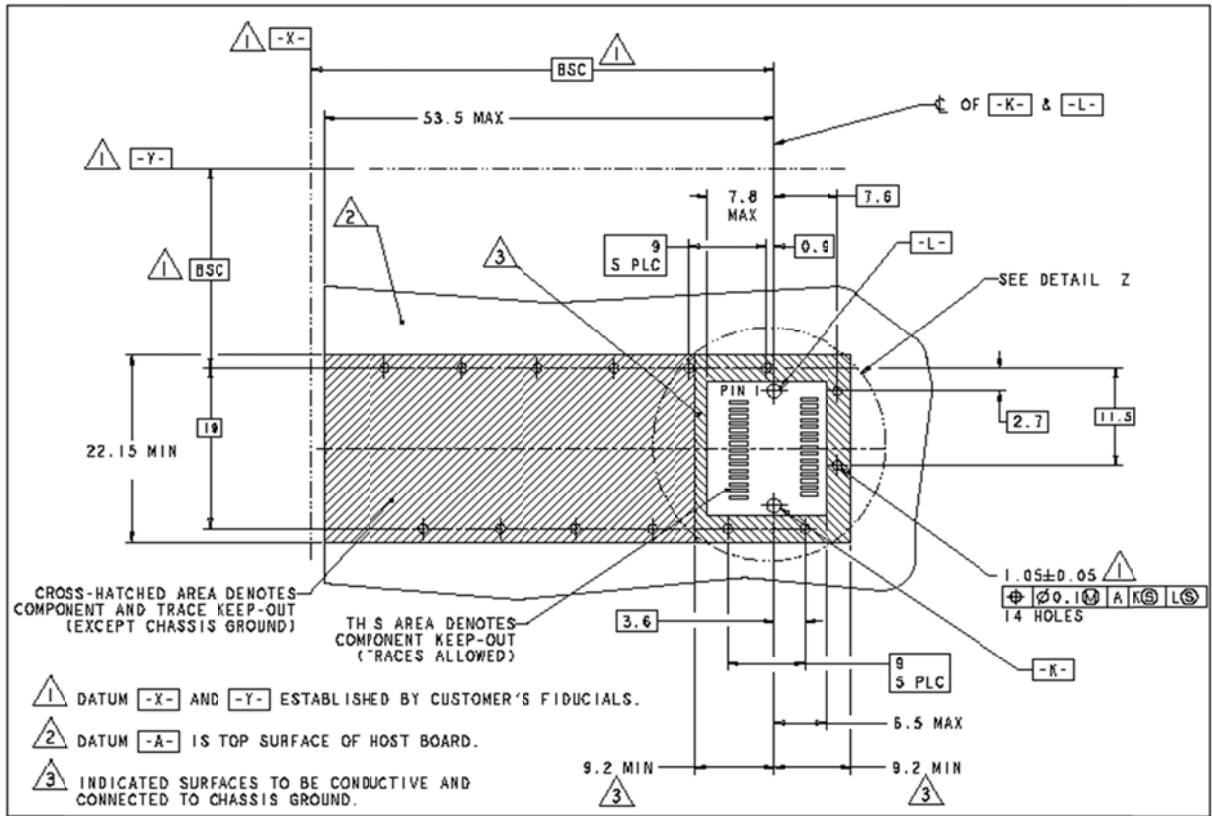
## **IX. Mechanical Specifications**

Finisar's XFP transceivers are compliant with the dimensions defined by the XFP Multi-Sourcing Agreement (MSA).

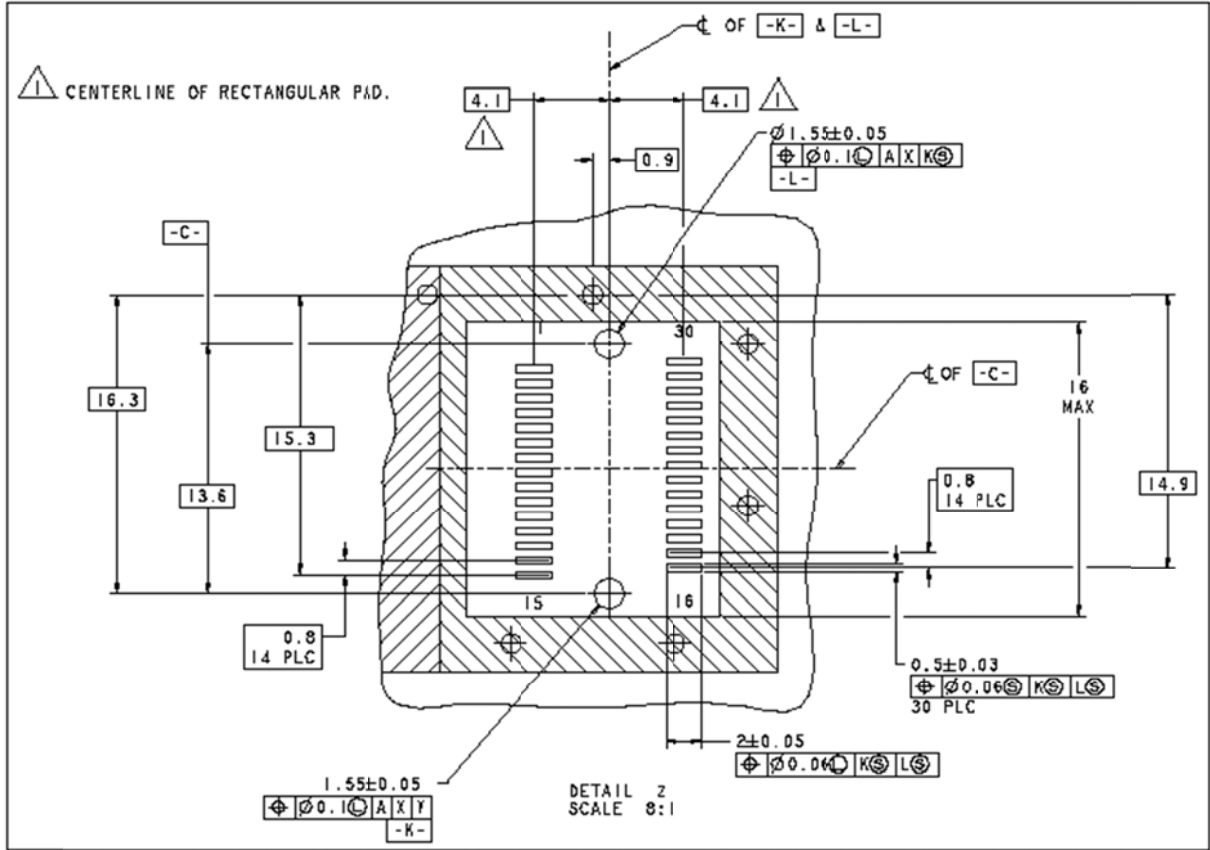


**XFP Transceiver (dimensions are in mm)**

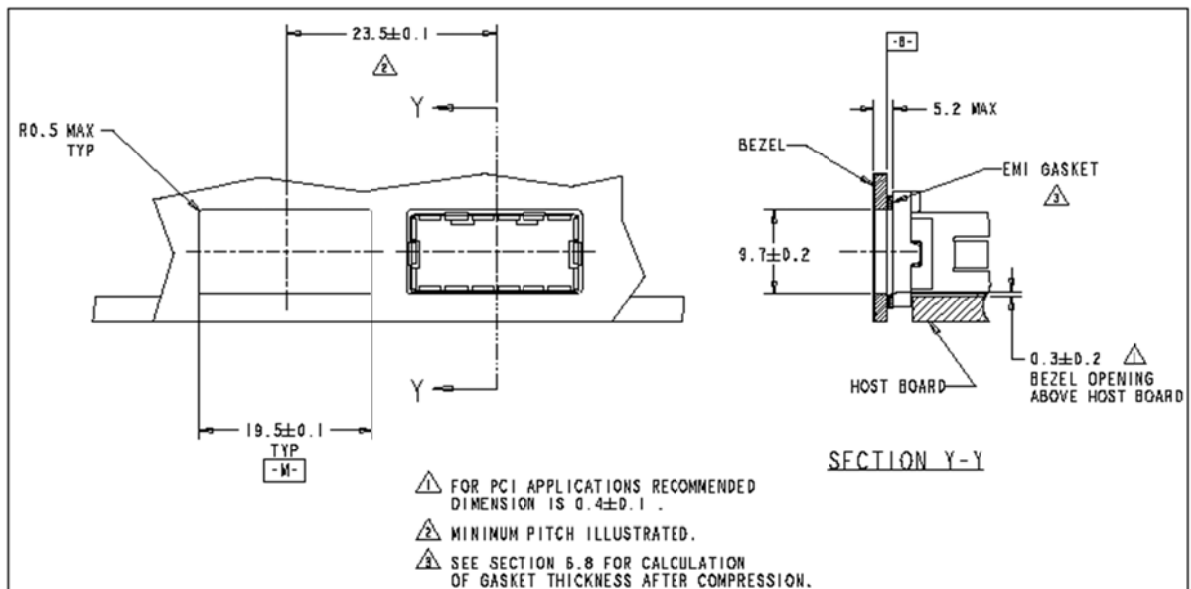
**X. PCB Layout and Bezel Recommendations**



**XFP Host Board Mechanical Layout (dimensions are in mm)**



**XFP Detail Host Board Mechanical Layout (dimensions are in mm)**



**XFP Recommended Bezel Design (dimensions are in mm)**

**XI. References**

1. 10 Gigabit Small Form Factor Pluggable Module (XFP) Multi-Source Agreement (MSA), Rev 4.5 – August 2005. Documentation is currently available at <http://www.xfpmsa.org/>
2. Application Note AN-2035: “Digital Diagnostic Monitoring Interface for XFP Optical Transceivers” – Finisar Corporation, December 2003
3. Directive 2002/95/EC of the European Council Parliament and of the Council, “on the restriction of the use of certain hazardous substances in electrical and electronic equipment”. January 27, 2003.
4. “Application Note AN-2038: Finisar Implementation Of RoHS Compliant Transceivers”, Finisar Corporation, January 21, 2005.

**XII. For More Information**

Finisar Corporation  
1389 Moffett Park Drive  
Sunnyvale, CA 94089-1133  
Tel. 1-408-548-1000  
Fax 1-408-541-6138  
[sales@finisar.com](mailto:sales@finisar.com)  
[www.finisar.com](http://www.finisar.com)