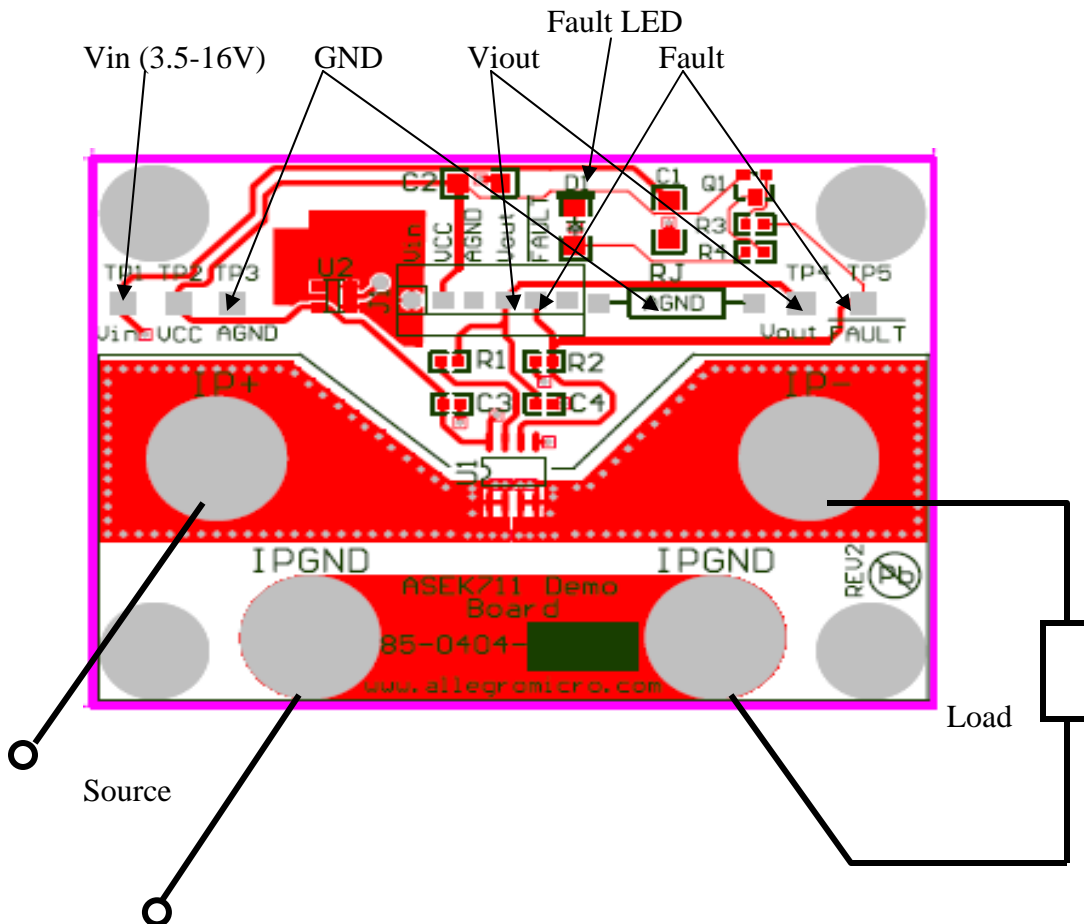
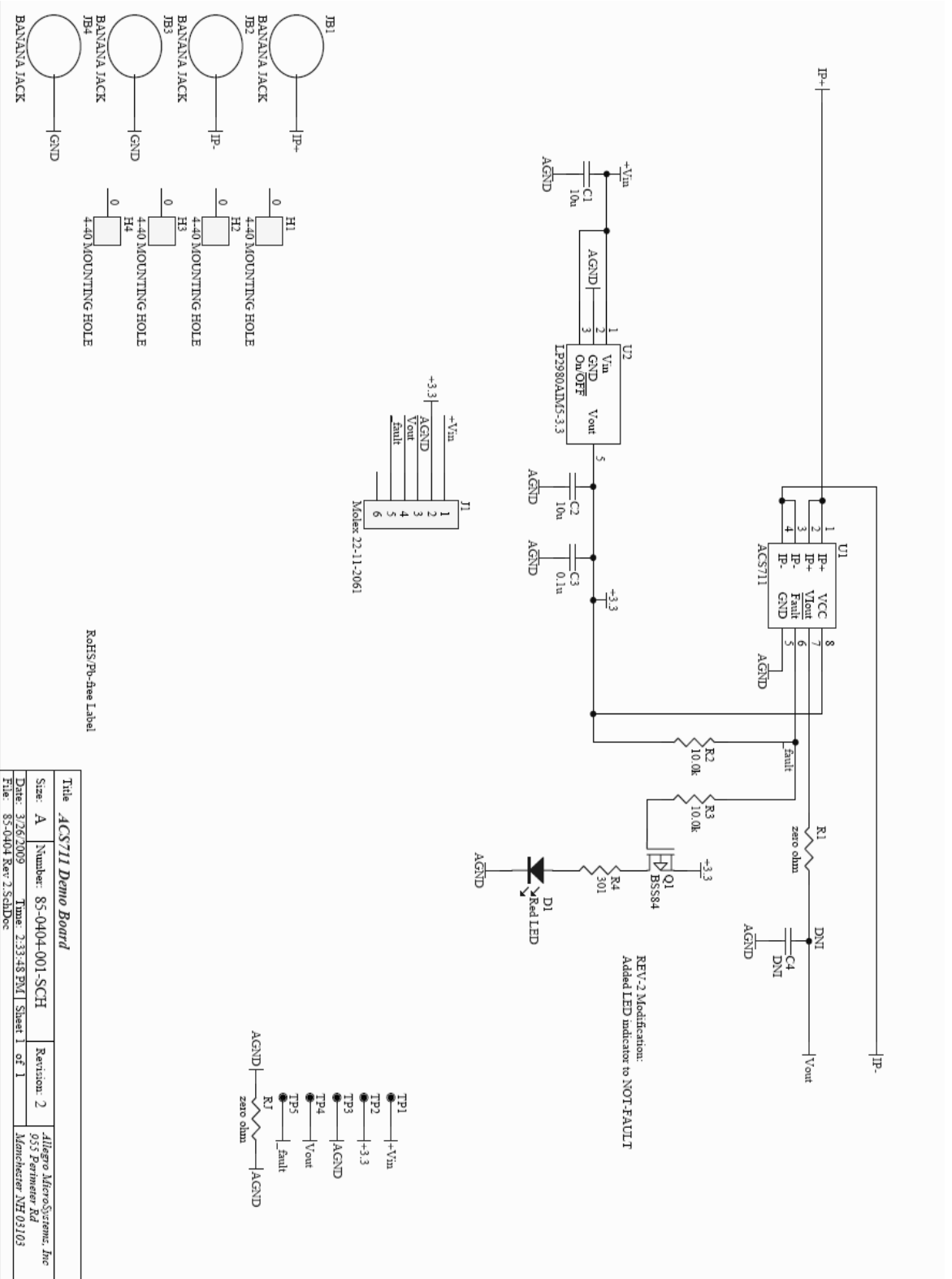


## ACS711 Demo Board User Instructions

- The following picture is the top view of the demo board with explanations pointed to each test point hook up and socket pin, and the connection diagram in a typical application.
- On board 3.3V voltage regulator U2 input voltage ( $V_{in}$ ) range: 3.5-16V.
- No external pull up resistor is needed for Fault pin as a 10k pull up resistor is already installed on board.
- Once the sensor faulted (Fault signal went low and Fault LED lights on) the only way to reset the fault is to reset Vcc.
- See ACS711 Data Sheet for detailed information. See next page for board schematic.





RoHS/Pb-Free Label

Title		ACS711 Demo Board	
Size: A	Number: 85-0404-001-SCHE	Revision: 2	Allegro Microsystems, Inc 955 Perimeter Rd Mesa, AZ 85205
Date: 3/26/2009	Time: 2:33:48 PM	Sheet 1 of 1	
File: 85-0404 Rev. 2.SchDoc			