

## SUMMARY



### # Wires

Low	0
High	0
Coax	0
Triax	0
Quad	0
Fiber	0
Fluidic	0

### Download

[Request a quote](#)

[Catalog](#)

Series	0S
Termination type	No contacts / Accessory
IP rating	61
Cable Ø	0.00 - 0.00 mm
Matching parts	xxx

## TECHNICAL DETAILS

### Mechanics

Shell Style/Model	BRR*: Cap spring loaded dust cap for ERA,ERN and EG receptacle or PSA and PK fixed receptacle
Keying	
Housing Material	PSU (Polysulfone) shell and collet nut, nickel plated brass latch sleeve and mid pieces
Cable Fixing	∅0 - 0 mm
Variant	N : Black

### Performance

Configuration
Insulator
Rated Current

### Others

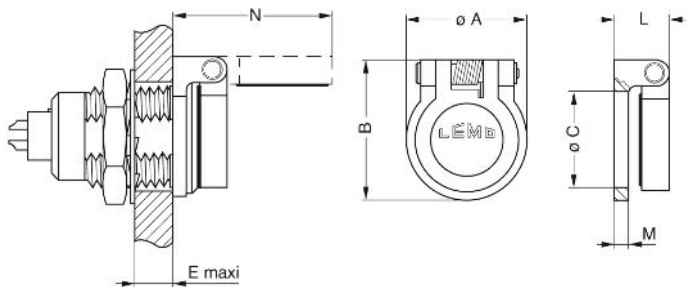
Endurance (Shell): 5000 mating cycles
Temp (min / max): -50°C / +150°C
Axes material: Nickel-plated brass
Maximum operating temperature: 100°C

Watertightness: IP61 according to IEC 60529  
IP Rating: 61

---

## DRAWINGS

### Draws



### Dimensions

	A	B	C	E	L	M	N
mm.	11	13.3	9	5.8	5	1.2	15.3
in.	0,43	0,52	0,35	0,23	0,20	0,05	0,60

---

## RECOMMENDED BY LEMO

### Tools

None

### Cables